



Message from the Dean

In today's climate, we must continuously look for new and innovative ways to fund our land grant mission. To that end, I consider my largest responsibility as dean to secure investments in future infrastructure for this college. We have created a new Office of Philanthropy and Alumni to step up our game in garnering substantial investments. They, along with everyone in the college, are diligently working to secure funds for scholarships, research, laboratories, buildings and more. Thanks to this effort and great philanthropic leaders who also believe in our work, we continue to advance.

College scholarship opportunities are growing and we expect awards to approach \$900,000 in 2017-18 – a 50 percent increase. Two of our most recent scholarship gifts are the Ezra “Demp” Alford endowment for students in the food science program and an anonymous gift for forestry students. The forestry state gift of \$5 million will support juniors and seniors and graduate students. The Alford gift of more than \$3 million will provide annual scholarship and fellowship support. Alford was a senior chemist for Brown and Williamson Tobacco, who upon retirement went on to run a consulting firm from his Louisville home analyzing flavors and fragrances for companies worldwide.



Additionally, thanks to great support from donors and friends of the college, two building and infrastructure projects are in the design phase with construction plans on the horizon. The Pirri Teaching Pavilion at Main Chance Farm will include space for 75 students. It will be equipped with smart classroom capabilities, heating, ventilation and air conditioning in designated areas of the pavilion and accessible bathrooms. This project is thanks to a \$6.8 million gift from the late veterinarian John Pirri Jr., and should be completed later this year.

Design work is also progressing on the Grain and Forage Center of Excellence in Princeton. Plans call for the additions and renovations to be complete by early 2019. Thanks to a huge boost from the Kentucky Agricultural Development Board and the support of many of our state's commodity organizations this project is on a great path. The college has received a number of gifts for this project in recent months and more continue to come. We still have work to do to fulfill our part of the financial bargain but we are well on our way.

Support for our great students, research and extension programs is strong. I see exciting opportunities in the future. For me, the slogan "it starts with us," means that the infrastructure to carry our college through this century depends on our efforts.

New faces in Philanthropy

The college's Office of Philanthropy and Alumni continues to grow with the addition of Danielle Jostes, who joined the team this spring as equine philanthropy director, and Tressa Neal, who will join the team July 10 as associate director of leadership annual giving. Jostes previously served as an assistant director of development at the University of Louisville's School of Medicine. Neal, a CAFE family science alumna, most recently was development assistant at the UK College of Law. They join Pamela Gray, senior director of philanthropy, Marci Hicks, director of philanthropy and Billy Toombs, external relations coordinator, in supporting our development efforts.

News



Robinson Forest

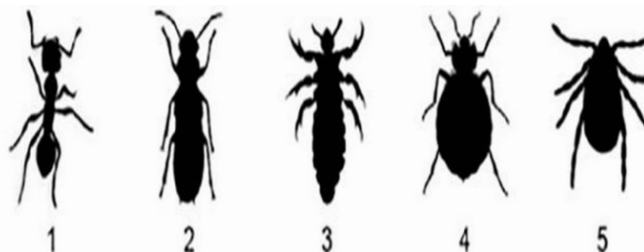
Robinson Forest opened its gates to neighbors and friends to offer them an opportunity to see this beautiful research forest. Here's a look at the forest from the fire tower and a [link](#) to more of the photographs taken that day.

Congratulations to those receiving promotion and tenure

In June, the College of Agriculture, Food and Environment presented 16 faculty cases for promotion, including nine cases for promotion with tenure, to the Board of Trustees. All 16 cases were approved. These faculty members truly represent what it means to excel in teaching, research, extension, and service. Please congratulate them on their success. [Click here](#) to learn more about them.

Traveling this summer— know what a bed bug looks like?

Maybe not. Despite the media attention these pests have received in recent years, a report by CAFE's agricultural economists Jerrod Penn and Wuyang Hu, and entomologist Michael Potter shows only 28 percent of



leisure travelers and just 35 percent of business travelers can identify them in a lineup of other common insects. The research "Bed Bugs and Hotels: Traveler Insights and Implications for the Industry" was initially published in *American Entomologist* and has subsequently garnered much media attention. Try to correctly identify the five insects in the graphic. Here's a [link](#) to one of the articles to compare results.

Spotlight



Annhal Norris, family & consumer science extension associate, shares her passion for canning and preserving foods, and how important it is to pass this knowledge along from one generation to the next.

Calendar of Events

July 4

Fourth of July Holiday

July 6

59th Annual Franklin County Farm-City
Field Day

July 13

Turf Field Day

July 27

Corn Soybean Tobacco Field Day

Helpful Links

[Giving](#)

[College Calendar for Faculty &
Staff](#)

[Contact Us](#)

